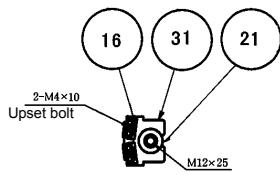
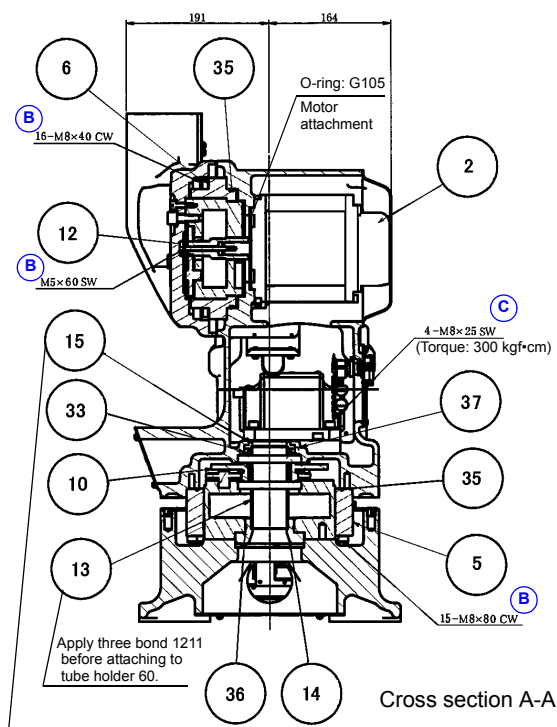


9. Assembly drawings

9.1 RT and UA axes

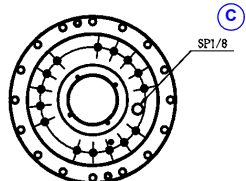


Cross section B-B

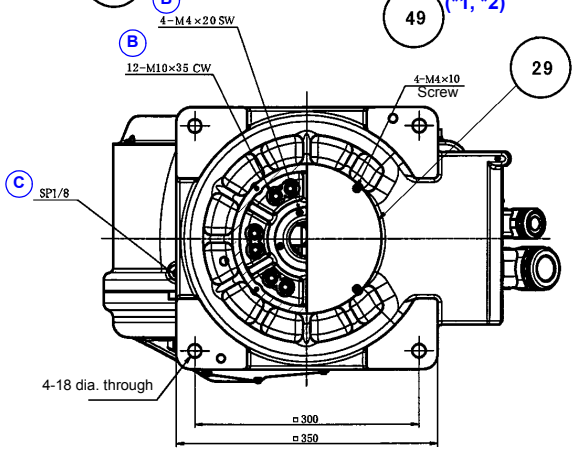
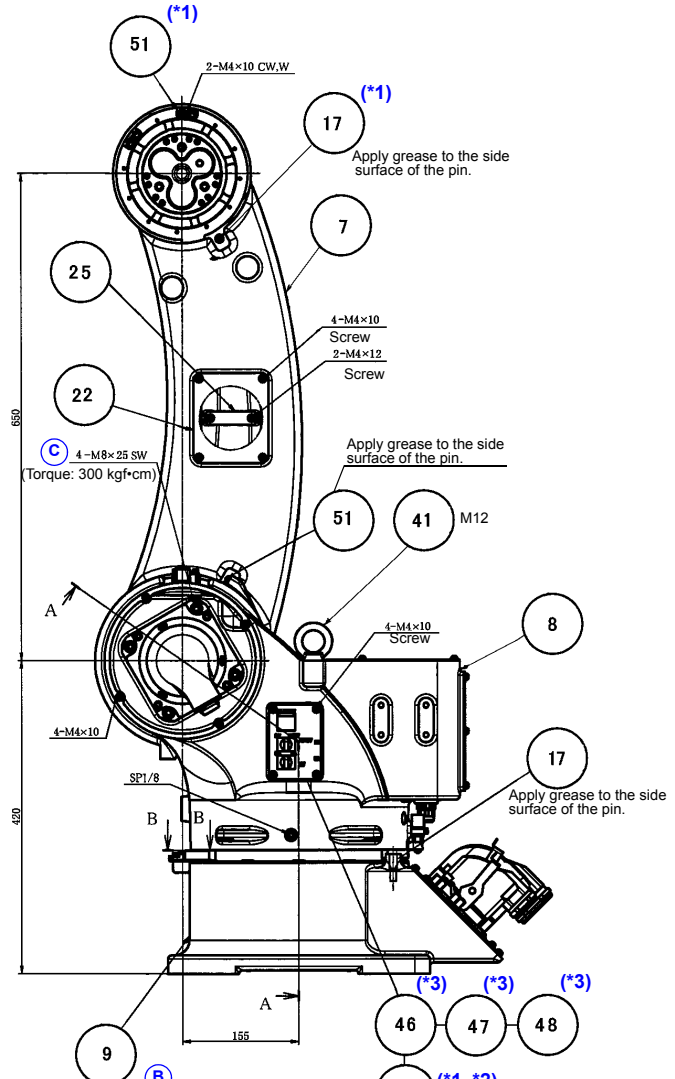


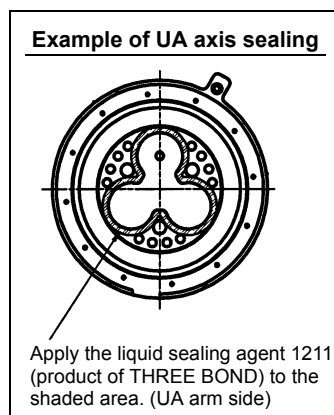
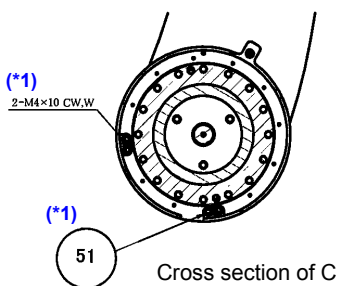
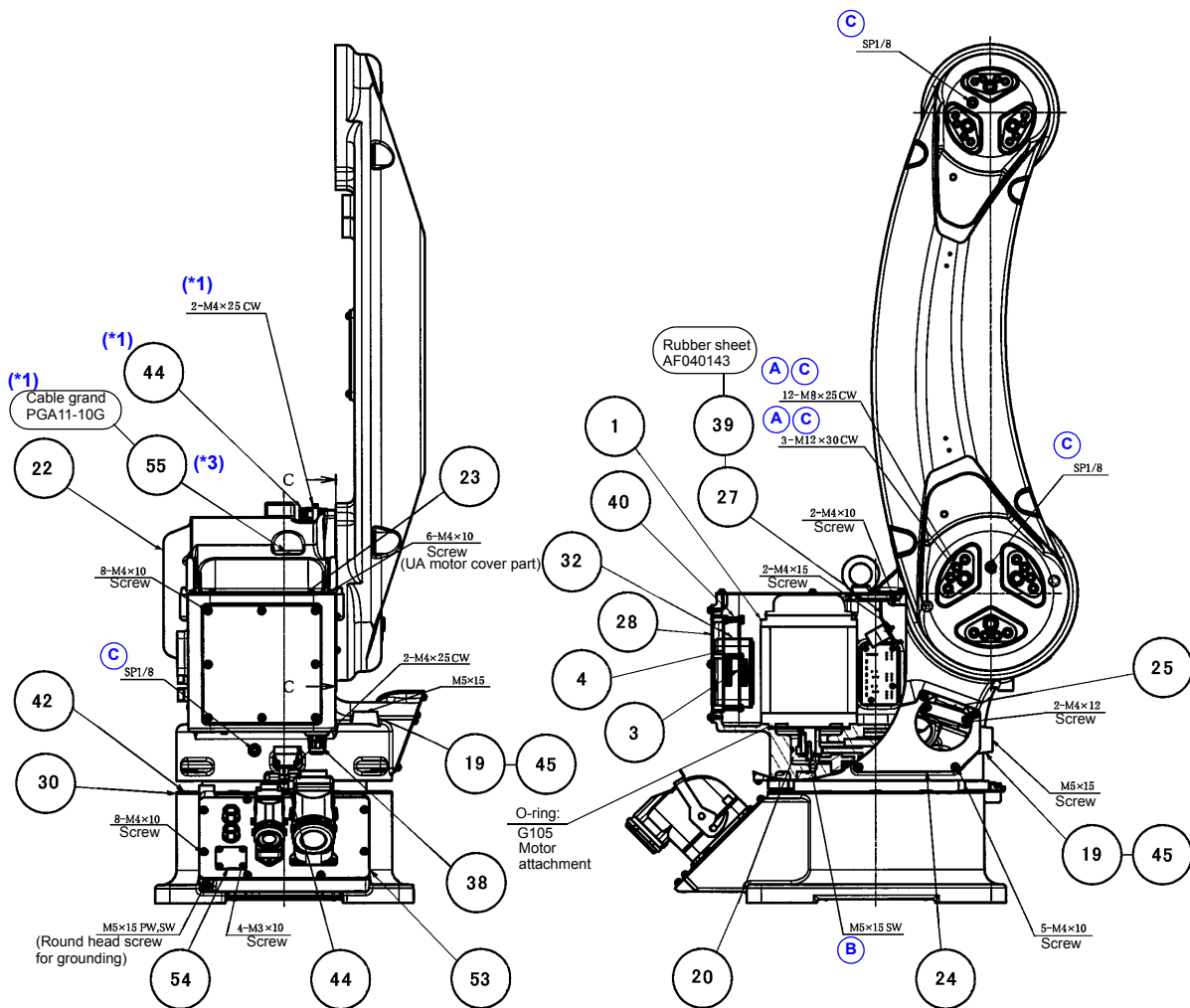
Cross section A-A

Apply three bond 1211 before attaching to UA body.



Details of RV reduction gear (38L001-0)





Note

- (*1) It is used for UL spec. of YA-1Q/YA-1R series.
- (*2) It is used for CE spec. of YA-1Q/YA-1R series.
- (*3) It is used for standard spec. YA-1Q/YA-1R series.

Assembly drawings

No.	Part name	Part number	Q'ty	Note	Class
1	Servo moter	TS4832N9030	1	RT axis	C
2	Servo moter	TS4833N9031	1	UA axis	C
3	Resolver card	ZUEP5764	1		C
4	Resolver card	ZUEP5764*B1	1		C
5	RV60C reduction gear	38L001-1	1	RT axis	C
6	RV50E reduction gear	38E023-1	1	UA axis	C
7	UA arm	ADA11093-01	1		D
8	UA body	ADA11096-02	1		D
9	RT base	ADA11095-03	1		D
10	Input gear R60	ADG41084	1		B
11	Pinion gear R60	ADG41083-01	1		B
12	Input gear R50	ADG32011-01	1		D
13	Inner tube 60	AGG41061	1		D
14	Tube holder 60	AFM32035-01	2		D
15	Harness guide 60	AGG41060	2		D
16	OT dog	ASM41043	1		D
17	CAL pin M8	AAG41004	2		D
18	UA motor cover	ADK41059	1		D
19	Rubber stopper H22	ABQ41007	1		D
20	RT motor collar	AFM41665	1		D
21	RT stopper	ABQ41026	1		D
22	UA arm cover	AKK41138	1		D
23	RT motor cover	ADK32022-01	1		D
24	UA harness cover	AKK41137-01	1		D
25	UA harness holder	AFP41185	2		D
26	Rubber sheet	AFQ40143	2		D
27	RT harness holder	AFP41186	1		D
28	RS plate	AKK32049-03	1		D
29	Base cover	ADD41139	1		D
30	Ring plate	AGK30008	1		D
31	RT dog bracket	AFP41220	1		D
32	Battery case	AKH41006	1		D
33	Bearing	6813ZZ	1		B
34	O-ring	AS568-169	1	RT axis	A
35	O-ring	AS568-258	1	UA axis	A
36	O-ring	S63	1		A
37	V-ring	V50A	1		A
38	Cable grand	PGA11-10G	1	U type only	D
39	PLICA saddle	SP24N	1		D
40	Spacer	3SQS20	6		D
41	Eyebolt	XVN12FJ	2		D
42	Cap	POP437	11		D
43	Lithium battery	ER6VCT	6		A
44	Limit SW ass'y	AEB31006	1		C
45	Washer	WSSB10-5-5	2		D
46	BKSW mounting plate	AKK41136	1		D
47	Card spacer	KGLS8RT	4		D
48	Brake card	ZUEP5759	1		C
49	BK release unit	AEU01418	2	E/U types only	C

No.	Part name	Part number	Q'ty	Note	Class
50	Limit SW ass'y	AEB31006	1	U type only	C
51	OT dog	ASM41043	4	U type only	D
52	CAL pin M8	AAG41104	1		D
53	Metal plug plate	AWC12819	1	Provided together with swiveling harness	D
54	Metal plug cover	AKK41152TB	1		D
55	End cap	514000	1		D

■ Remarks

- (1) Use the grease type: MORI WHITE RE 00.
 - (2) Standard bolt clamping torque:
 - Bolts marked with (A): Refer to the table of “Standard torque for bolts” for proper clamping torque.
 - Bolts marked with (B): Apply the screw lock 1344(*) and then tighten them at the torque listed on the “Standard torque for bolts”.
 - (3) Applied washer types: Use one of the following washers unless otherwise instructed.
 SW: spring lock washers,
 CW: Conical spring washers,
 PW: Plain washers
 - (4) Appended parts mounting part marked with (C): apply the liquid sealing agent 1211(*) before fastening.
 - (5) Sealing of RV reduction gear joint part when installing the UA and RV reduction gear to the UA arm:
 - Refer to “**Sealing treatment of RV reduction gear**” in FA and RW axes.
 - Apply the liquid sealing agent 1211(*) before fastening.
 - (6) Standard amount of grease to be enclosed:
 - (a) To fill: See table “**Amount of grease enclosed (at factory).**”
 - (b) To refill: See table “**Amount of grease enclosed (Refil).**”
 - (7) Apply the sealing agent to the following parts other than screws. Joints between (a) inner tube 60 and tube holder 60, (b) harness guide 60 and UA body, (c) RV reduction gear (UA axis) and UA arm (See “Cross section E-E”.)
- (*) : Product of THREE BOND.

● Standard torque for bolts

Standard torque for bolts		
Bolt name	Clamping torque	
	N•m	kgf•cm
3	20 ±0.02	20 ±0.2
4	4.5 ±0.05	46 ±0.5
5	9.8 ±0.1	100 ±1
6	18.5 ±0.2	188 ±2
8	37 ±0.4	380 ±4
10	74 ±0.7	750 ±8
12	128 ±1.3	1310 ±13
14	205 ±2.1	2090 ±21
16	319 ±3.2	3250 ±33
20	622 ±6.2	6350 ±64

● Amount of grease enclosed (Unit: g)

Amount of grease enclosed (Unit: g)					
Axis	Grease	at maker	at factory	Total	Refil
UA	MORI WHITE RC00	0	270	270	150
RT(a)	MORI WHITE RE00	0	696	696	400

Note

(a): Pump two-push each of grease from UA arm side and the RW body side. (total of four pushes)